

# Style PG1250: Premium-Grade Fiberglass Tape with Vermiculite Coating and PSA

## 0.125" Thick with Vermiculite Coating and PSA

REVISED: SEPTEMBER 6, 2011

Base Material: Texturized E-Glass

Weave: Plain

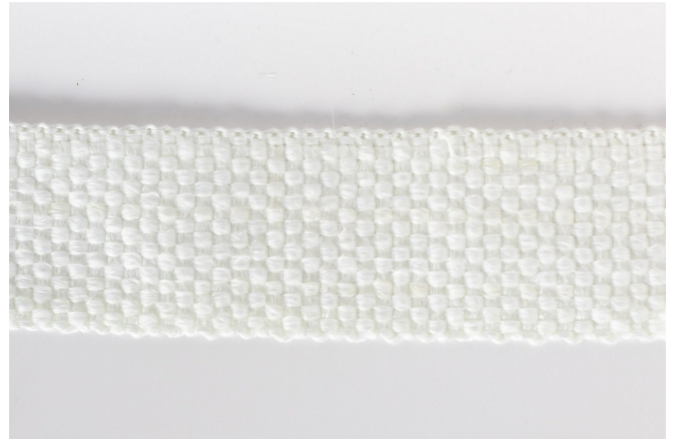
Thickness: 0.125" (+/- 10%)

Width: 0.50" - 6.00" Standard

Roll Length: 100 ft

Service Temperature: 2000°F (Intermittent)

Coating: Vermiculite - Natural Color



## SPEC FOR PSA

Total Thickness (not including liner): 3.20 mil

Adhesive Thickness (liner side): 1.25 mil

Adhesive Thickness (exposed side): 1.45 mil

Carrier Thickness (polyester film): 0.50 mil

Release Liner Thickness (60# kraft): 3.50 mil

Adhesive Color: Clear Amber